



HYTE

EXPERIENCE PLAY

PREMIUM ITX CASE

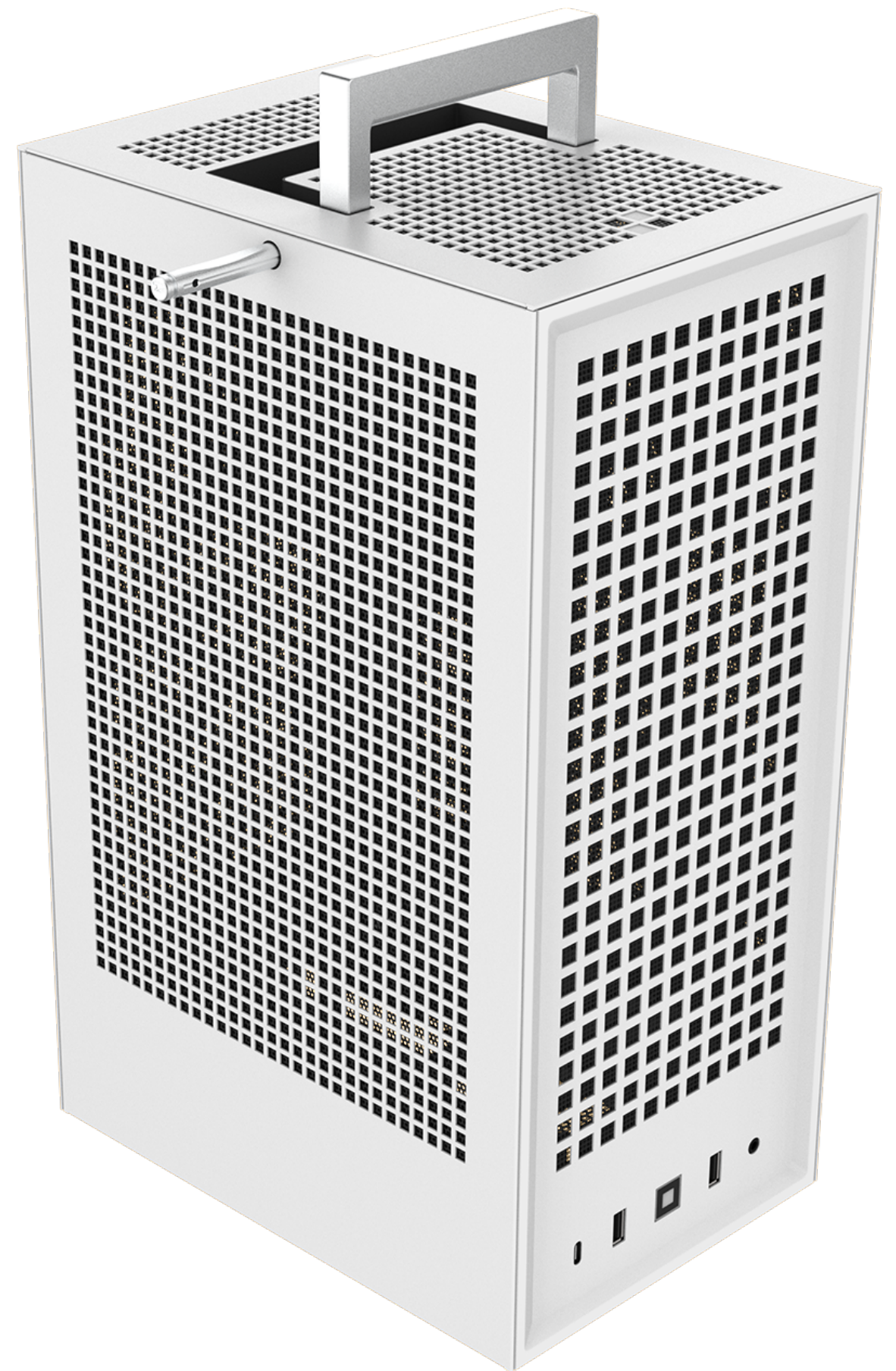
REVOLT 3



E X P E R I E N C E P L A Y

Specs & Compatibility

Material	Aluminum, Steel, ABS
Color	Black, White
Dimensions	253 x 178 x 409mm (9.9" D x 7" W x 16.1" H)
Motherboard Size	ITX
Radiator Support	120, 240, 140, 280mm up to 35mm thick
Clearance	Graphics Card: Most cards up to 335 x 140 x 58mm* Power Supply: SFX, SFX-L (700W 80 Plus Gold SFX-L Optional) CPU Cooler Height: Up to 140mm Handle Weight Limit - 30lbs. (14kg) * See list of compatible graphics cards on HTYE.com
Expansion Slots	3
Internal 3.5 Bays	1
Internal 2.5 Bays	2
Front Interfaces	USB 3.2 Gen 2 Type-C x1, USB 3.2 Gen 1 Type-A x2, Audio/Mic Combo x 1
Dust Filters	Front (metal mesh), Top, Sides, Rear (magnetic)
Case Weight	14lb (including PSU)



The REVOLT 3 was designed to be a compact ITX case unlike any other. Access your PC from nearly any angle to upgrade and modify. There's a place for everything - including the latest graphics cards. With its clean design and attention to detail, this case will be sure to turn heads wherever you take it.

KEY FEATURES:

- Separate airflow paths for processor and graphics cooling
- Vertical GPU orientation
- Pop-out handle and accessory holders, for maximum portability
- Radiator Door swings open for easy upgrades
- Front IO for a clean and simple setup